

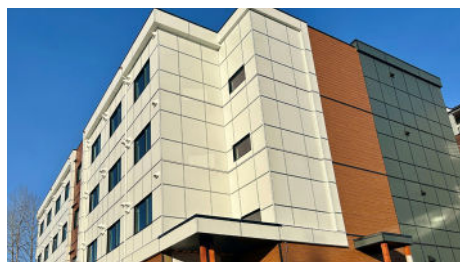
# Maple Ridge

Coast Mental Health (Coast) provides 150 homes at three facilities located in Maple Ridge. Many of these tenants have complex care needs and would be at risk of homelessness without the assistance of housing and mental health supports. Staff supports are available 24/7, and include on-site mental health workers, a nurse rotation, and a range of inpatient and outpatient supports with Fraser Health.



## Alouette Heights (46 homes)

- Operation established March 2017
- Outreach Team available Sunday to Saturday
- Daily breakfast and lunch



## Rivers Reach (52 homes) ʔi cən tecəl ʔə tə stələw “I arrive at the river”

- Opening late March 2025
- Community programming
- Daily meal and breakfast



## Garibaldi Ridge (51 homes)

- Opened September 2019
- Community programming
- Daily meal and breakfast



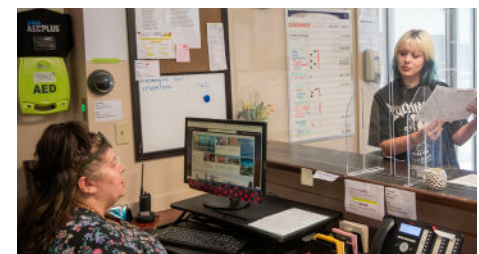
## Community Resource HUB

- Resumed operations in 2024
- Offers a space for people to connect with community agencies for housing and community healthcare supports
- Collaboration with the City of Maple Ridge and Lu'ma Native Housing Society



## Outreach Services

- Serving adults 19 years+ at risk of homelessness
- Offering immediate help: shelter, food, housing support, and referrals to healthcare services



## Youth Counsellors

- Supporting individuals ages 19–30 with case management, life skills, employment, and resource connections

## Compassion, Courage, Recovery

All our tenants are encouraged to work with our team to set goals and access appropriate health services, including:

- Psychiatric clinic and treatment programs
- Rehabilitation and recovery
- Reconnecting with a local doctor
  - Residential treatment programs
  - Drug and alcohol counselling
  - Mental health teams and services
- Referrals to local Health Authorities for higher levels of care
- On-site psychiatric clinic available to tenants at all three sites

## Community Safety

- 24/7 on-site mental health workers.
- On-site psychiatric clinic available once a week for residents.
- Tenant selection is based on our ability to provide the right level of support to residents.
- Regular inspections and repairs are provided by our property management team.
- Residents complete tenancy agreements, which include a crime-free addendum.
- Buildings include lightening, security cameras, fob key access, and an employee-managed reception.
- The Community Advisory Committee, made up of local health services and community members, addresses neighbourhood concerns.
- The Community Resource HUB offers outreach services and assistance with housing.



## Our Successes

- Collaboration with BIA Clean Team in Maple Ridge.
- We now have several tenants working as peer support workers with Maple Ridge Street Outreach Services.
- A resident's artwork was selected as part of 2024 National Indigenous Peoples Day promotional activities.
- Three residents received Coast Mental Health's Carma Rogers Awards, recognizing their advocacy, tenant support, and community contributions.



## About Coast Mental Health

Coast Mental Health advocates for people and their families with mental health challenges. We believe in three essential pillars of sustained recovery: Housing, Support Services, and Education & Employment. We have over 50 years of experience serving 3,303 people every year through our programs and services. Our more than 50 facilities across Greater Vancouver and Lower Mainland continue to grow because of our specialized expertise and community-based support services in mental health. Learn more at [www.coastmentalhealth.com](http://www.coastmentalhealth.com)